

4

3

2

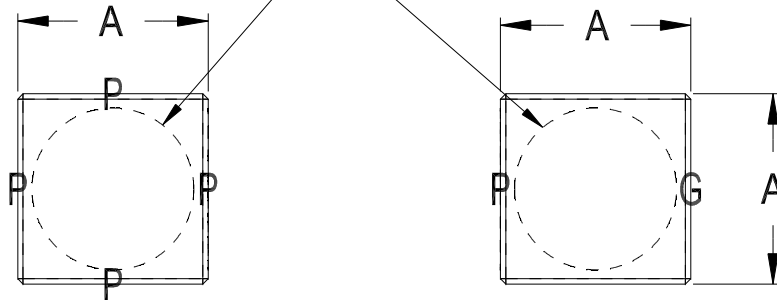
1

REV	DESCRIPTION	DATE	APPR
-	INITIAL RELEASE	12/04/13	AH
A	ADDED 10mm OPTION (39100), REVISED COATING NOTE, ADDED SS OPTION AND NOTE 12	09/08/15	NL
B	REVISED COATING NOTE, REMOVED SS OPTION AND NOTE 12	04/28/17	NL & JG

**NOTES:**

- 1) **DIMENSIONS: -A- ± 0.127mm SEE TABLE 1**
- 2) **MATERIAL: SEE TABLE 2**
- 3) **90° ANGLE ACCURACY: SEE TABLE 3**
- 4) **GROUND SURFACE PERPENDICULAR TO FOUR ADJACENT OPTICAL SURFACES WITHIN 0° 1' 0"**
- 5) **CLEAR APERTURE: 85% DIAMETER**
- 6) **SURFACE FLATNESS: LAMBDA / 8 @ 632.8nm**
- 7) **SURFACE QUALITY: 80-50 PER MIL-PRF-13830**
- 8) **SURFACES MARKED "P" POLISHED SURFACE MARKED "G" FINE GROUND**
- 9) **PROTECTIVE CHAMFERS: 0.50mm TYP @ 45°**
- 10) **COATING: Al - SiO2 FOR R(avg) > 87% FROM 400-700nm ON 5 (FIVE) SURFACES MARKED "P"**
- 11) **CUSTOM MOUNTING OR THREADED INSERTS AVAILABLE UPON REQUEST**
- 12) **N/A**

SEE NOTE 5



**TABLE 1**

PART No.	DIM -A- (mm)
39100	10.0
39110	12.7
39120	15.0
39130	19.0
39140	25.4
39150	31.8
39160	38.1
39170	CUSTOM (C)

**TABLE 2**

MATERIAL
PYREX or equiv (P)
N-BK7 (B)
FUSED SILICA (FS)
ZERODUR (Z)
N/A
CUSTOM (C)

**TABLE 3**

ACCURACY (arc sec)
1
2
3
4
5
CUSTOM (C)

**ORDERING EXAMPLES:**

39120Z-2 (15mm, ZERODUR, 2" ACCURACY)  
 39170C-C (CUSTOM DIMENSION, CUSTOM MATERIAL, CUSTOM ACCURACY)

**PRECISION OPTICAL**

320 KALMUS DRIVE, COSTA MESA, CA. 92626 (949) 631-6800

TITLE <b>ALIGNMENT CUBE MIRROR, FIVE SIDE POLISHED</b>			
SIZE <b>A</b>	CODE IDENT NO. <b>39100 SERIES</b>	DWG NO. <b>39100 SERIES</b>	REV. <b>B</b>
SCALE	RELEASE DATE	SHEET 1 OF 1	

UNLESS OTHERWISE SPECIFIED DIMENSIONS ARE IN INCHES	DRAWN <b>N. LAMBERT</b>	DATE <b>11/27/13</b>
TOLERANCES:	CHECK	
2 PLACE DECIMALS: ± .010	DESIGN ACTIVITY <b>39100</b>	
3 PLACE DECIMALS: ± .005	CUSTOMER <b>CATALOG</b>	
ANGLES: ± 0° 3'		

MATERIAL <b>SEE TABLE</b>
USED ON <b>ALIGNMENT CUBE MIRRORS</b>

THIS DOCUMENT CONTAINS PROPRIETARY INFORMATION THAT IS NOT TO BE DISSEMINATED OR REPRODUCED WITHOUT THE WRITTEN CONSENT OF PRECISION OPTICAL

4

3

2

1

39100 SERIES